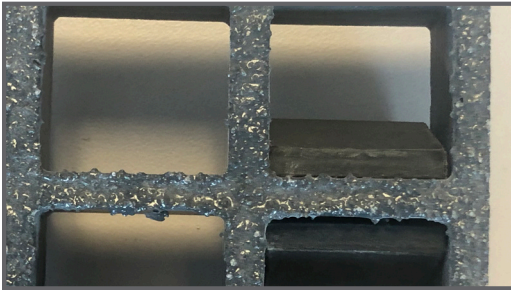


# Non-Penetrating Rooftop Walkway Grating Installation Guide

## Pedestal Layouts

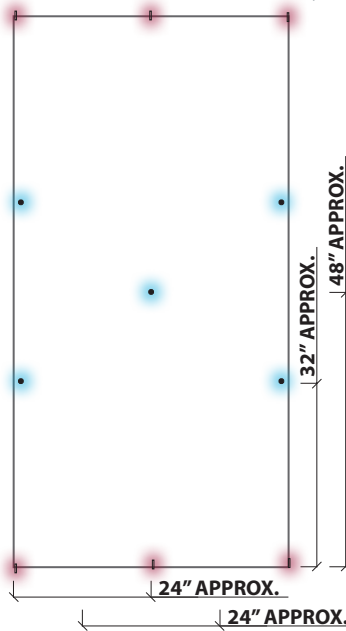
### For 1" & 1-1/2" deep square mesh molded grating

- 100 psf
- Deflection  $\leq 0.25"$
- The standard rubber feet layout will meet or exceed industry standards for typical pedestrian loads.



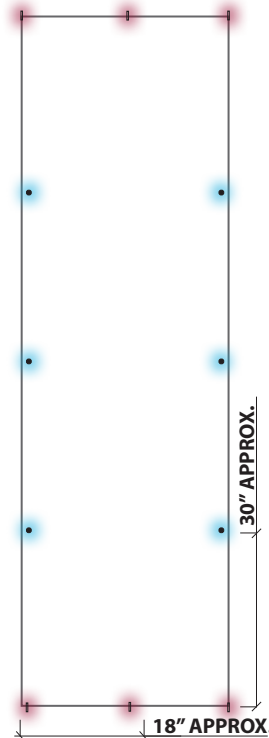
### 4' x 8' Grating Panels

11 Rubber Feet Per Panel (\*NC)

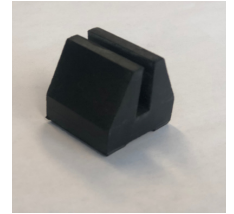


### 3' x 10' Grating Panels

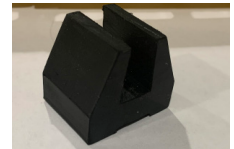
10 Rubber Feet Per Panel (\*NC)



- Rubber Feet
- Rubber Connectors



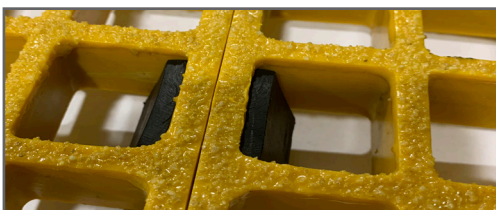
Rubber Feet



Rubber Connector

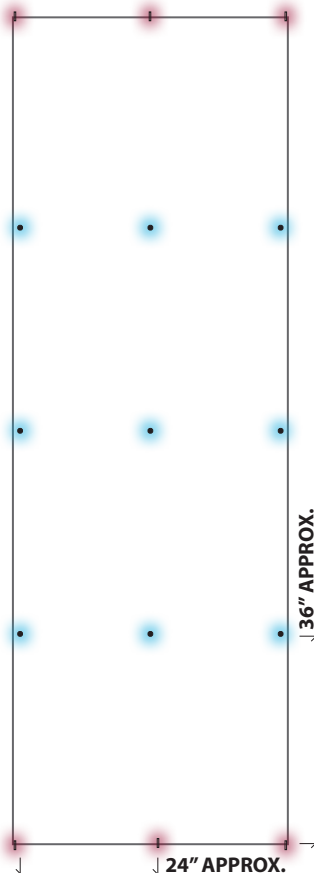
## Installation Instructions

1. Turn the molded grating panel upside down.
2. Use the diagram for the coordinating grating panel size and place the rubber feet onto the bottom of the molded grating and push into place.
3. Repeat for each dot in the diagram.
4. When connecting one panel to another, use three rubber connectors to join abutting edges with two on each panel end with the third centered. Reference the diagrams to the right for visual description. **Replace connectors with rubber feet if there is no connection point.**



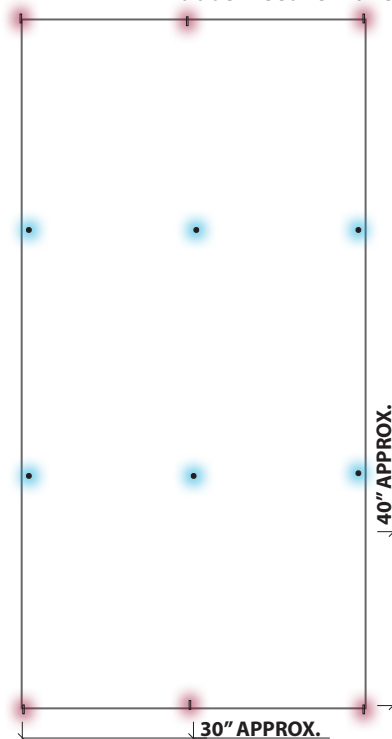
### 4' x 12' Grating Panels

15 Rubber Feet Per Panel



### 5' x 10' Grating Panels

12 Rubber Feet Per Panel



\*NC= No Connection